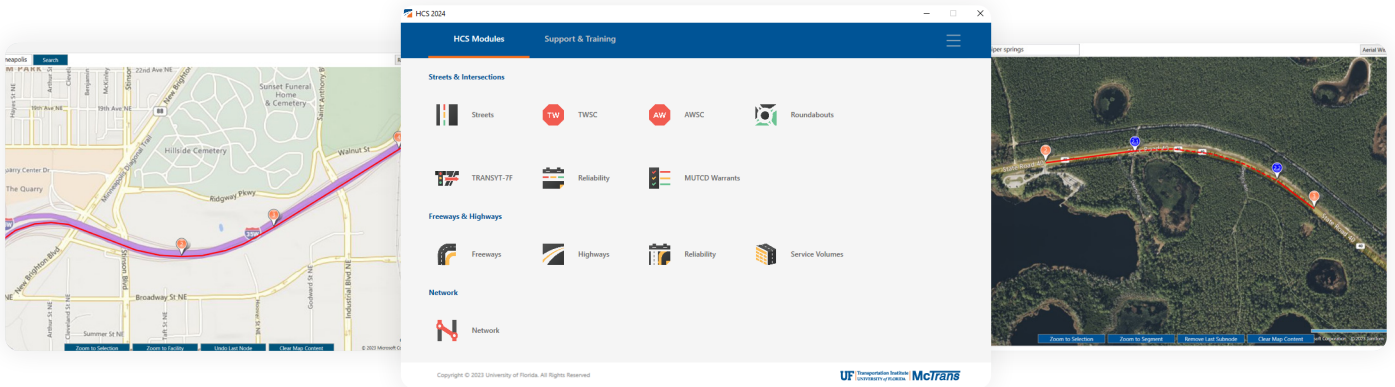




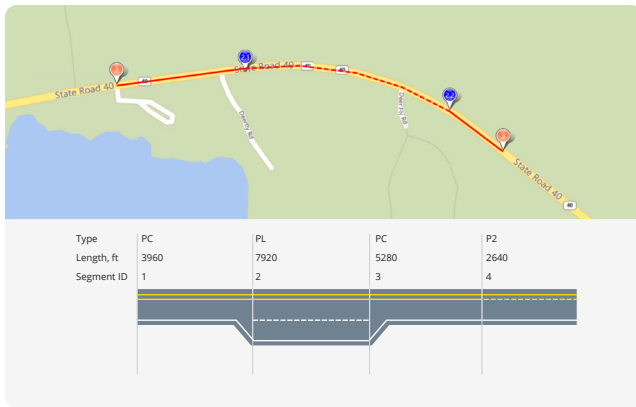
**HCS™**

## Highway Capacity Software



A credible and reliable traffic analysis software that implements the methodologies from the Highway Capacity Manual (HCM).

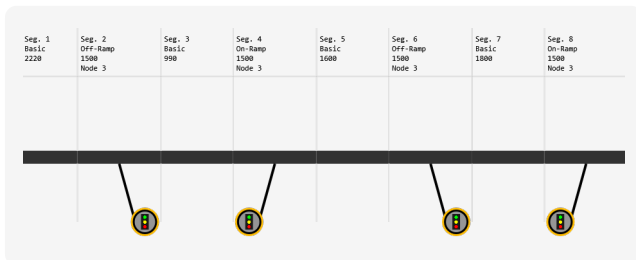
### HIGHLIGHTS



**Map-Based Segmentation and Corridor Analysis**



**Improved Pedestrian Analysis Methods**



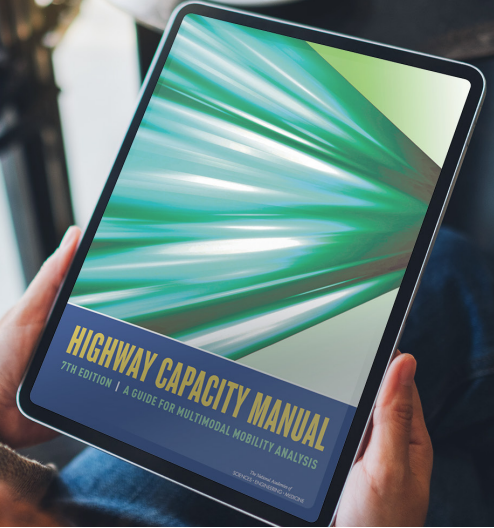
**New Method - Two-Lane Highways**

Facility Analysis Results				
AP	VMT veh-mi/AP	VMT-Demand veh-mi/AP	VHD veh-h/AP	Total Delay Cost \$/AP
1	5207	4728	1.86	46.42
2	5306	4751	1.67	41.70
3	5125	4637	1.53	38.17
4	4997	4554	1.43	35.72

**Reports Vehicles-Miles Traveled (VMT) and Vehicle-Hours of Delay (VHD)**

# COMPLIANT WITH THE HCM

The Highway Capacity Software faithfully implements the methodologies from the 7th edition of the Highway Capacity Manual.



## OVERVIEW



**Analysis Type**  
Multimodal  
Traffic



**Resolution Type**  
Macroscopic



**Compliance**  
to HCM

## INTEGRATION & WORKFLOW



Supports  
metric units



Import/export  
from excel



Export to  
TSIS-CORSIM



Export to HSS  
(Freeways & Highways)

## APPLICATIONS

### Planning-Level Analyses

Long-range transportation planning  
Initial screening of alternatives  
Feasibility studies

### Operational Analyses

Traffic impact studies  
Evaluation of future conditions  
Build multiple scenarios

### Travel Time Reliability

Long-term variations of travel time  
Cyclical variations of traffic demand  
Effects of weather, incidents, and work zones

## SCOPE OF ANALYSIS

### Freeways

Facility and Segment	Managed Lanes (HOV, HOT)
Lane-by-Lane Analysis	Incidents
Multi-period Analysis	Work Zone Analysis
Oversaturated Conditions	User Delay Cost
Travel Time Reliability	

### Highways

Multilane highways	Passing Lane Analysis Horizontal Alignment Super 2 (2+1 Highways)
Two-lane highways	

### Arterial / Streets

Pre-timed Control	Signal Timing Optimization
Actuated Control	Facility/Segment Analyses
Coordinated Control	Work Zone Analysis
Travel Time Reliability	Access Point Analysis

### Interchanges and Alt. Intersections

Diamond	RCUT/Super Street
DDI	MUT/Michigan Left
Partial Cloverleaf	SPUI
Displaced LT / Continuous Flow Intersection	

### Unsignalized Intersections

Stop-controlled	Roundabouts
-----------------	-------------

### Other Analyses

Emissions Report	Connected Automated Vehicle
Network Analysis	