



Hidden Gems in HCM Analysis

6 Surprising HCM Capabilities You Need to Know

Each chapter in the Highway Capacity Manual (HCM) contains analysis capabilities that might have what you need to deal with some challenging analyses. Below are a few interesting analyses covered by the HCM that are implemented in HCS:



Two-Lane Highways

Super 2 (2+1) two-lane highway configuration.

[Read More >](#)



Multilane Highways

Isolated merge, diverge, or weaving segments on multilane highways and C-D Roads.

[Read More >](#)



Two-Way STOP Controlled Intersections

Delays to major road movements when left + through lanes are present.

[Read More >](#)



Signalized Intersections

Platooning effect of upstream signals on STOP-controlled intersections / access points

[Read More >](#)



Freeways

Lane addition or drop at merge and diverge segments.

[Read More >](#)



Roundabouts

Includes modern roundabout methodology.

[Read More >](#)

In the Community

The team at McTrans had the opportunity to hold vendor booths at various exhibitions. We talked with attendees, including many of our clients, about our products and solutions for mobility, safety planning, and engineering.



Transpo 2022
Bonita Springs, FL



2022 ITE International Annual Meeting
New Orleans, LA

Attending upcoming events?

Make sure to visit our booth and talk to our experts! We look forward to meeting you.

[TexITE 2022 Fall Meeting](#) | Denton, TX | September 7-9

[ITS World Congress 2022](#) | Los Angeles, CA | September 18-22

Upcoming Features in HCS 2023

Take a peek at two of the new features in our upcoming HCS 2023 release.

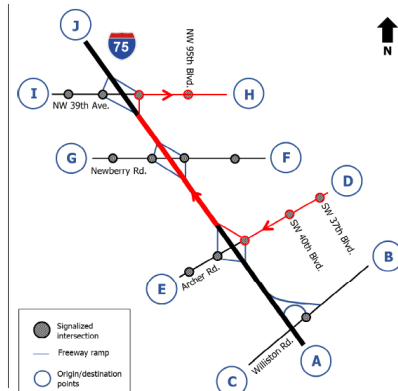


Network Module

Implementation of the new HCM Chapter 38, the network analysis will allow the user to combine interacting arterial and freeway models for the first time. Features:

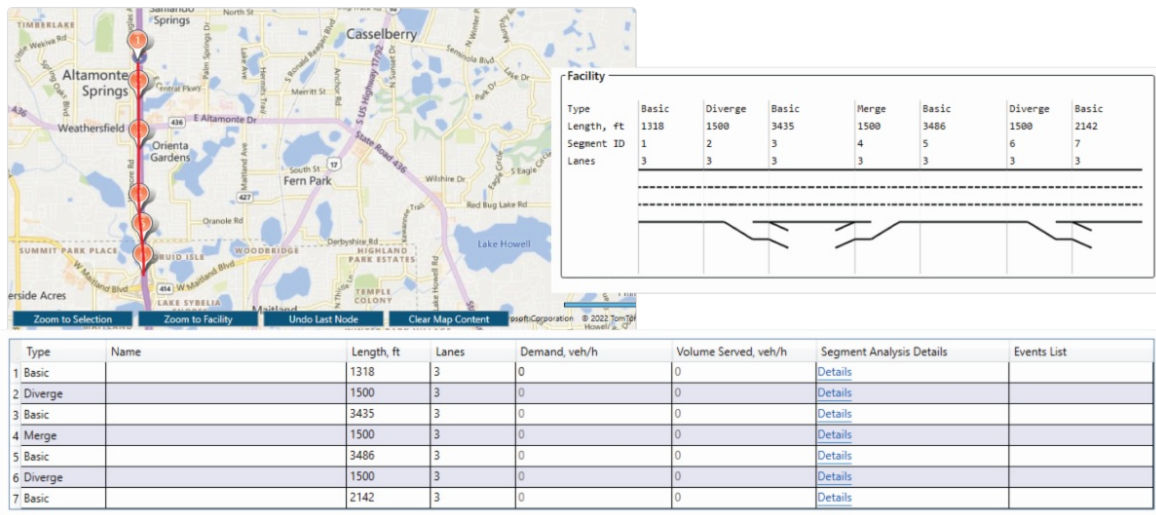
- Lane-by-lane performance measures
- Performance measures for trips over multiple facilities.
- On-ramp and off-ramp spillback checks.

Exhibit 38-21
Example Problem 1: Network
Interchanges, Intersections,
and O-D Points



Map-Based Segmentation for Freeways

HCS Freeways module will include a new tool for segmenting freeway facilities on a Bing Maps background, classifying resulting segments according to the HCM methodology for freeways. The map segmentation tool promotes modeling efficiency while ensuring HCM segmentation compliance.



User Feedback



As we wrap up the next update of our software, this video shows an example of how we handle our users' feedback. At McTrans, we value user suggestions and ensure that we make the best use of them in a timely manner.



Staff Spotlight
Yanjun (Kirk) Shi
 Master's Student - Transportation Engineer

After finishing my undergraduate degree majoring in transportation engineering at Tongji University, I worked for a year in the industry. After that, I came to the University of Florida (UF) to pursue a master's degree. Studying at UF helps me better understand advanced technologies for transportation nowadays. I also have the chance to connect with different people in the transportation industry by being a part of UFTI.

This spring, with Dr. Behzad's trust and support, I got the opportunity in McTrans to work on a translation project. Works include translating materials from English to Mandarin Chinese,

updating the websites, and writing articles. I am very excited to contribute my knowledge and experience to McTrans.

Working in McTrans has always been a great opportunity for me. The collaborative atmosphere and professional colleagues inspire me to work hard. In the last several months, I have needed to cooperate with different colleagues on various subjects. From this, I learned a lot not only about transportation knowledge but also about soft skills. All the experience will certainly support me in my future study, work, and life.



Highway Safety Analysis

Applicable for **8 PDHs**

Aug 30 - 31, 2022 1-5 PM ET

Traffic Engineering Fundamentals

Applicable for **8 PDHs**

Sep 14, 21, & 28, 2022 10 AM-2 PM ET

Highway Capacity Analysis

Applicable for **12 PDHs**

Aug 16 - 18, 2022 1-5 PM ET

Transportation Equity Fundamentals

Applicable for **8 PDHs**

Transportation Equity Fundamentals I

Oct 24 & 25, 2022 1-5:30PM ET

Transportation Equity Fundamentals II

Oct 06 & 07, 2022 1-5:30PM ET

Ready to register?

Visit us at mctrans.ce.ufl.edu/training/.

Have questions or want to learn more?

Send us an email at mctrans@ce.ufl.edu.

Stay Connected With Us



Tel: 1-800-226-1013 | **Email:** mctrans@ce.ufl.edu | **Website:** <https://mctrans.ce.ufl.edu>

McTrans Center | PO Box 116585, Gainesville, FL 32611-6585 <https://mctrans.ce.ufl.edu/>

[Unsubscribe mctrans@ce.ufl.edu](mailto:Unsubscribe_mctrans@ce.ufl.edu)

[Update Profile](#) | [Constant Contact Data](#)
[Notice](#)

Sent by mctrans@ce.ufl.edu